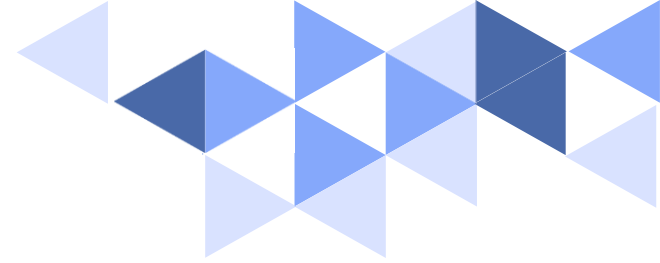




# Strategic Pathfinder Plan



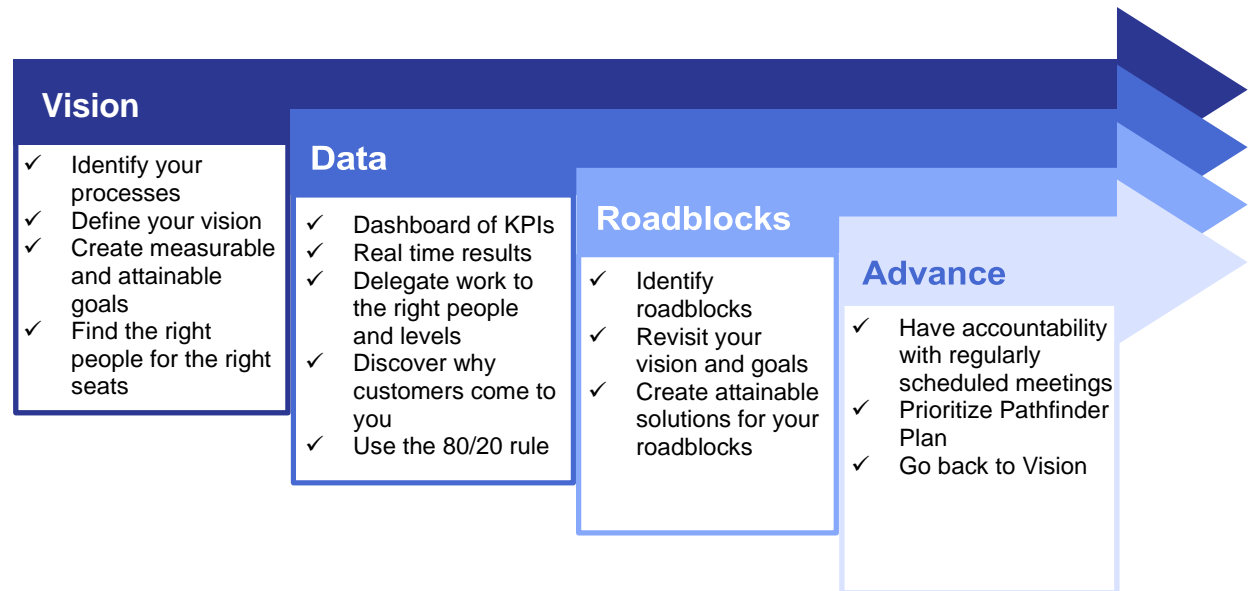
**Strategic Pathfinder Plan** is a planning approach that emphasizes consistent meetings to ensure the vision is progressing towards the goals set forth by the organization.

There are 4 core values to the Strategic Pathfinder Plan:

## Core Values

- Vision
- Data
- Roadblocks
- Advance

## Core Values



Let us help guide you on your path toward success!